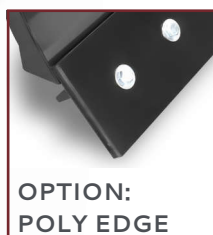
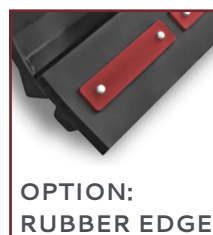


# V60 ANGLE SNOW BLADE

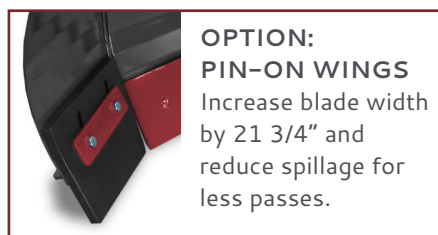
Available widths 72", 84", 96", 108", 120"



OPTION:  
POLY EDGE



OPTION:  
RUBBER EDGE



OPTION:  
PIN-ON WINGS  
Increase blade width by 21 3/4" and reduce spillage for less passes.

**TWO-CYLINDER**  
HYDRAULIC ANGLE

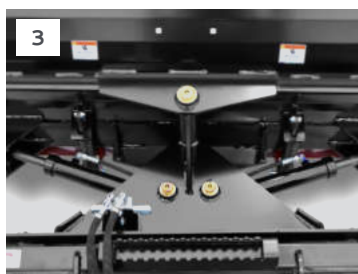
**31.0"**  
BLADE  
HEIGHT

**1020-1225 LB**  
OVERALL WEIGHT  
(VARIES BY MODEL)

GREATER THAN  
**1500 LB**  
LOADER OPERATING CAPACITY



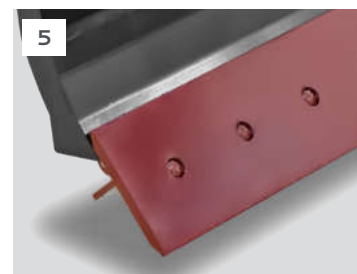
1. 4° SIDE-TO-SIDE OSCILLATION FOLLOWS UNEVEN SURFACES



2. HYDRAULIC CROSSOVER RELIEF VALVE PROTECTS ATTACHMENT BY ANGLING BLADE UPON IMPACT



3. ANGLE BLADE 30° LEFT OR RIGHT FROM INSIDE CAB



4. TRIP EDGE PROTECTS OPERATOR & EQUIPMENT

5. 5/8" x 8" REVERSIBLE STEEL BOLT-ON EDGE ALLOWS 5 1/2" OF WEAR

MODEL	SBS72	SBS84	SBS96	SBS108	SBS120
Width: Overall, Straight / Full Angle (In)	74.0 / 64.0	86.0 / 74.0	98.0 / 84.0	110.0 / 95.0	120.0 / 104.0
Overall Height (Inches)	31.0				
Overall Depth, Straight (Inches)	37.5				
Blade Angle (Degrees)	(+/-) 30				
Moldboard Thickness (Inches)	0.19				
Cutting Edge (Inches)	5/8 x 8 Bolt-on				
Blade Oscillation (Degrees)	(+/-) 4				
Cylinder Bore / Stroke (Inches)	2.0 / 8.375				
Cylinder Pins / Hinge Pins Dia (In)	1.25 / 1.563				
Approximate Weight (Pounds)	1020*	1075*	1130*	1185*	1225*
Recommended Loader Capacity	Greater than 1500 pounds				

\*Weight with steel edge installed.