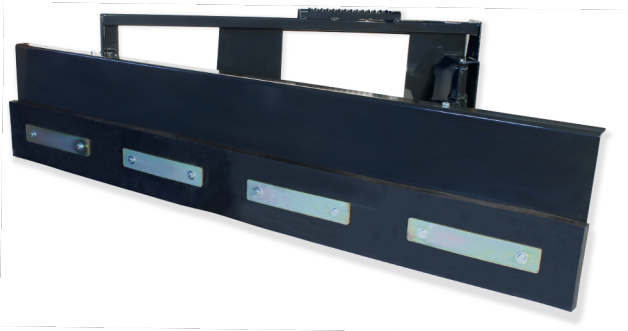


FEED PUSHER



- > Five width adjustments keeps feed away from tires.
- > Eight angle adjustments keeps feed moving efficiently.
- > 1 ½" x 10" reversible, replaceable rubber edge allows 6" of total wear.

MODEL		FPV				
Blade Height (Inches)		20.0				
Blade Length (Inches)		96.0				
Width Adjustment Position	1	2	3	4	5	
Angle: Min Max (Degrees)	38.4 58.2	40.9 61.6	43.0 65.0	44.6 68.3	45.6 71.7	
Push Width: Min Max (Inches)	50.5 75.2	45.6 72.5	40.5 70.2	35.4 68.3	30.4 67.2	
Discharge Distance*: Min Max (Inches)	48.7 49.5	51.3 53.9	53.3 58.1	54.6 62.1	55.3 66.0	
Approximate Weight (Pounds)		520				

*Measured from Center Line of Loader.

V40 UTILITY FORK

60" · 66" · 72" · 78"



- > Tines easily penetrate piles and low profile allows excellent visibility.
- > 1 ¾" diameter, 1045 CFSR tines require no maintenance and are removable for easy replacement.

MODEL	MV60	MV66	MV72	MV78
Overall Bucket Width (Inches)	61.3	67.3	73.3	79.3
Bucket Depth (Inches)	33.5			
Bucket Height (Inches)	21.5			
Number of Tines	9	10	11	12
Space Between Tines (Inches)	5.4	5.3	5.2	5.1
Tine Diameter (Inches)	1.75*			
Approximate Weight (Pounds)	545	570	655	695
Recommended Loader Capacity	Less than 2400 pounds			

*Tine Material is 1045 CFSR Round (100,000 PSI Minimum Yield Strength).

