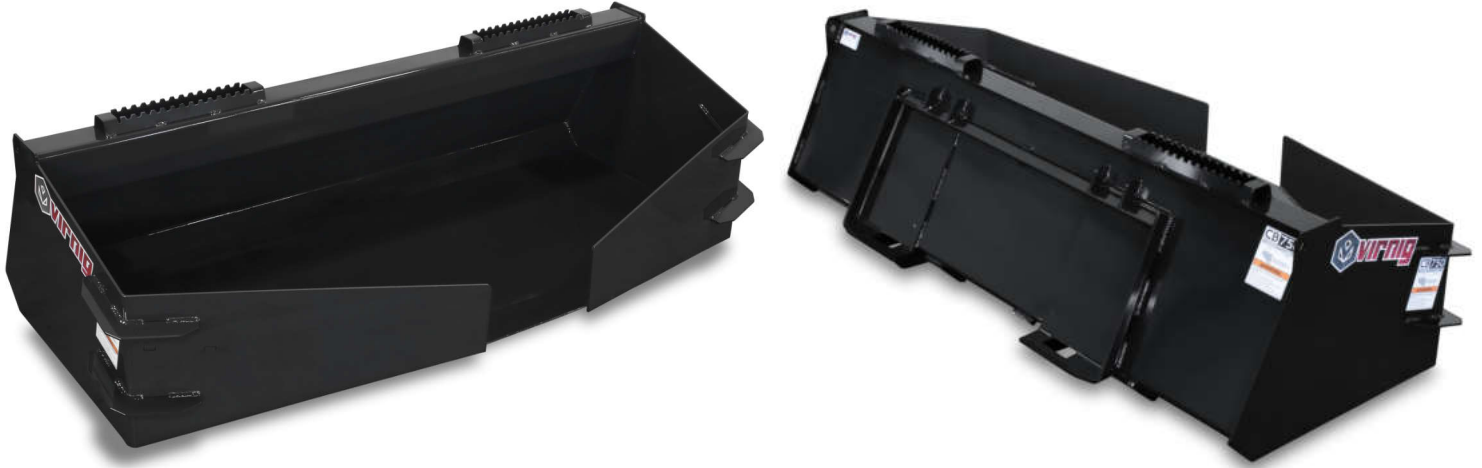


CONCRETE BUCKET

Carry and pour concrete and other free-flowing materials.



0.50 CUBIC YARD
CAPACITY

OR

0.75 CUBIC YARD
CAPACITY



1

1. METAL MARKERS INSIDE BUCKET SHOW FILL LEVEL



2

2. REINFORCED CORNERS



MODEL	CB500	CB750
Width: Overall / Inside (Inches)	63.5 / 59.1	82.5 / 78.1
Overall Height (Inches)	22.5	23.7
Depth: Overall / Inside (Inches)	42.9 / 38.5	44.7 / 40.7
Maximum Capacity (Cubic Yards)	0.5	0.75
Chute Width (Inches)	8.0	12.75
Shell Thickness (Inches)		0.19
Structural Wear Bars Under Bucket (1/2" x 3")		3
Approximate Weight (Pounds)	515	630
Recommended Loader Capacity	Attachment weight and load MUST NOT exceed operating capacity of loader.	